

High-Risk Breast Program

SPECIALIZED, COMPASSIONATE CARE FOR YOUR HIGH-RISK PATIENTS

We recognize the importance of early identification and proactive management for patients at increased risk for breast cancer. Our High-Risk Breast Care Program offers your patients personalized risk assessment, evidence-based surveillance, and supportive care in a compassionate, multidisciplinary setting. We partner with you to ensure your patients receive the highest level of care and guidance throughout their journeys.

Our multidisciplinary team includes **breast health specialists, breast radiologists, genetic counselors, nurse navigators, nutritionists, behavioral health providers, and oncology experts.** Together, we tailor a care plan based on your patients' unique risk profiles and wellness goals.

SERVICES WE OFFER

- Comprehensive risk assessments using advanced risk modeling tools
- Genetic counseling and testing
- Tailored screening plans, including 3D mammography and breast MRI
- Preventive strategies, including lifestyle counseling and medication options
- Ongoing support and follow-up care from a dedicated team
- Education to help patients make informed health decisions

SYMPTOMATIC PATIENTS

Please do not refer symptomatic patients to the high-risk program. Patients with symptoms should be sent directly to one of our breast surgeons.

REFERRALS

- **SAMG Providers:** Please use the "High-Risk Breast Program Referral Panel" in Epic
- **Independents:** Please fax to (208) 367-7987

LOCATIONS & MORE INFORMATION

Boise | 900 N Liberty St, Suite 101 | Boise, ID 83704

Nampa | 4400 E Flamingo Ave, Suite 200 | Nampa, ID 83687

Ontario | 1050 SW 3rd Ave, Suite 3200 | Ontario, OR 97914

Baker City/Outreach | 3175 Pocahontas Rd | Baker City, OR 97814

Visit SaintAlphonus.org/HRB or call our High-Risk Breast Coordinator **Michelle Herrera** at **(208) 367-3019**.

Welcoming New Patients



Elizabeth Prier, MD
(208) 863-9536
BOISE



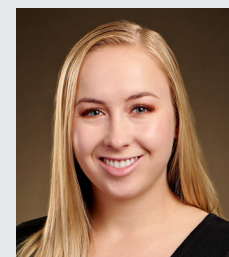
Addie Barnes, PA-C
(208) 949-3368
BOISE



Katherine Homer, DO
(248) 904-0082
NAMPA



Pamela Bruce, MD
(208) 740-4895
ONTARIO/
BAKER CITY



Addison O'Leary, MS, CGC
Licensed Genetic Counselor

WHO TO REFER: A woman who meets 1 of the 5 risk categories can be referred.

1. Lifetime Breast Cancer Risk \geq 20%

Tyrer-Cuzick score calculates the patient's lifetime risk of developing breast cancer based on factors such as age, height and weight, breast density, personal and family history of cancer, reproductive history (age at first period, first birth, and menopause), hormone use, and heritage.

- Patient has a Tyrer-Cuzick score above 20% as noted on a previous mammogram result. (Score can be found toward end of radiologist's report.)

2. Positive Genetic Test or Known Familial Mutation

- Patient has a pathogenic variant in a breast cancer gene (e.g., BRCA1, BRCA2, CHEK2, PALB2, TP53)
- Patient has a first-degree relative (parent, sibling, or child) with a known pathogenic variant

3. Atypical Breast Biopsy

- Atypical ductal hyperplasia (ADH)
- Atypical lobular hyperplasia (ALH)
- Lobular carcinoma in situ (LCIS)

4. Personal History of Radiation

- History of chest radiation between ages 10–30 (e.g., Hodgkin lymphoma treatment)

5. History of Breast Cancer

- History of breast cancer before age 50