

FISCAL YEAR 2025 (JULY 2024-JUNE 2025)

COMMUNITY IMPACT REPORT

Saint Alphonus Medical Center Ontario
(SAMC-Ontario)



Saint Alphonus
A Member of Trinity Health

Our Community Impact by the Numbers

\$5,552,896 in IRS-defined Community Benefit

\$1,567,408 in Financial Assistance at Cost (patient's co-pays, co-insurance, and deductibles for patients with incomes up to 400% of the Federal Poverty Level)

\$1,679,518 in Unpaid Cost of Medicaid

\$2,305,970 in Community Benefit Programs

\$5,207,677 in Community Impact Activities

Community Impact meets the spirit of community benefit and acknowledges the investments made that are making an impact in the community that the IRS does not consider, such as unpaid cost of Medicare.

\$137,634 in Community Contributions

In our continuous commitment to building a healthier community, SAMC-Ontario provided contributions to vital community-based initiatives that address a broad spectrum of needs related to the prioritized CHNA needs. Partners include, but are not limited to:

- Oregon Food Bank worked to reconstruct the commercial kitchen at River Bend Place to serve as the Ontario Community Food Center, providing a regional food pantry and kitchen/food education center serving Malheur County.
- Angel Wings provided transportation to medical appointments and other services for patients and community members in cancer treatment.

Community Collaborations & Coalitions

SAMC-Ontario is committed to being not only a trusted healthcare partner for life for our patients, but a partner in addressing the leading social influencers of health by working in collaboration with governmental agencies, community-based organizations, and service providers to assure we are helping our communities not just to survive but to thrive. SAMC-Ontario plays an active role in community groups such as BUILD Payette, Payette and Washington Community Health Action Teams, Western Treasure Valley Food Hub

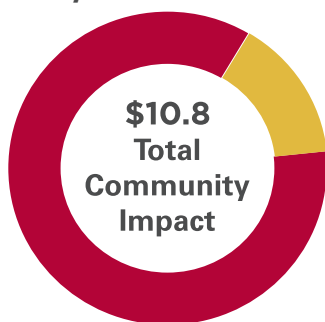
Partnership, Malheur County Local Community Health Partnerships, EOCCO Work Group, and the Nutrition Oregon Campaign.

2023 Community Health Needs Assessment and Implementation Strategy Priorities

A Community Health Needs Assessment (CHNA) identifies community assets, needs, and the current state of health and social well-being of a community. The process requires input from those who live in the community on both identifying and prioritizing the needs that will be addressed in the three-year Implementation Strategy. SAMC-Ontario found these 3 needs to be the most significant in the 2023 CHNA:

- Safe, Affordable Housing
- Access to Affordable Healthcare
- Safe, Reliable Transportation

For a more in-depth explanation of the CHNA and Implementation Strategy, visit <https://qrco.de/bgP8cA>



Community Health Worker Team

STORY SPOTLIGHT

The Fruitland-based Community Health Worker received a referral for an Oncology patient that needed transport to/from appointments in Boise. The CHW was able to arrange needed transport through Angel Wings who also provided gas cards for the patient when he could drive himself to appointments. The patient is now able to easily access his medical care because of the work of the Saint Alphonus Community Health Worker.

Community Impact at a Glance



Integrating Social & Clinical Care

Each year we ask our patients about their health-related social needs. Questions include things that make it hard to be healthy like problems with work, housing, food, safety, and transportation. This information helps us:

- Understand our patients' needs and their barriers to care
- Connect patients to resources and services specific to their needs

Last year, more than 4,000 SAMC-Ontario patients seen in primary care settings were screened for social needs. 37% of those screened identified at least one need. Top needs include:



Financial Insecurity



Social Isolation



Food Access or Food Insecurity

Key Community Initiatives

Community interventions are hospital-based services, programs, and activities that promote health and healing as a response to identified community needs. Some examples of our community interventions include:

Community Health Workers (CHWs) are trusted members of the community and work closely with patients by assessing their social needs, home environment and other social risk factors, and ultimately connect the patient (and their family) to services within the community. SAMC-Ontario employs 1 CHW as part of our care teams serving Malheur County with additional support from the 10 CHWs serving the Treasure Valley and the 2 CHWs in Baker County. In FY25, CHW received nearly 200 referrals to assist patients with social needs and helped more than 130 patients successfully achieve their goals.

BUILD Payette Since 2023, Saint Alphonsus has been the lead health partner in the BUILD Payette community coalition in partnership with WICAP, St. Luke's Health System, and Southwest District Health. BUILD Payette is a 3-year initiative to support affordable housing opportunities connected to other most needed and most wanted community services as identified by residents. In FY25, the collaborative focused on community outreach and engagement around the collocation of housing and healthcare services between Valley Family Health Care and LEAP Housing.

Tobacco Free Living Program Tobacco Free Living Program: In FY25, the Saint Alphonsus Health System Tobacco Free Living program provided 1:1 tobacco- and vape-cessation coaching to nearly 500 patients. The program also offered 22 no-cost classes and delivered health-education sessions about the risks of tobacco and vaping at schools and community health fairs.

Faith Community Nurses FY25 was the 25th anniversary of Faith Community Nursing (FCN) at Saint Alphonsus. Volunteer nurses from across the Saint Alphonsus Health System provide both health and spiritual care to people within their church homes and communities. In FY25, FCNs provided well over 4,000 volunteer hours, provided 455 blood pressure screenings, served 176 individuals during foot clinics, and taught CPR classes to 164 participants.

COMMUNITY RESOURCE DIRECTORY

Need a little help?

Call (208) 367-4482 (4HUB)

Community Health Workers are available to assist in finding community resources in your area. Services are **free** to anyone.

Available 8am - 5pm Monday through Friday.



Community Health Worker Program



Support Your local CHWB Fund

Not all communities have equal opportunities to be healthy, or the same needs. That's where SAMC-Ontario steps in and steps up. We do what is necessary to promote good health for everyone.

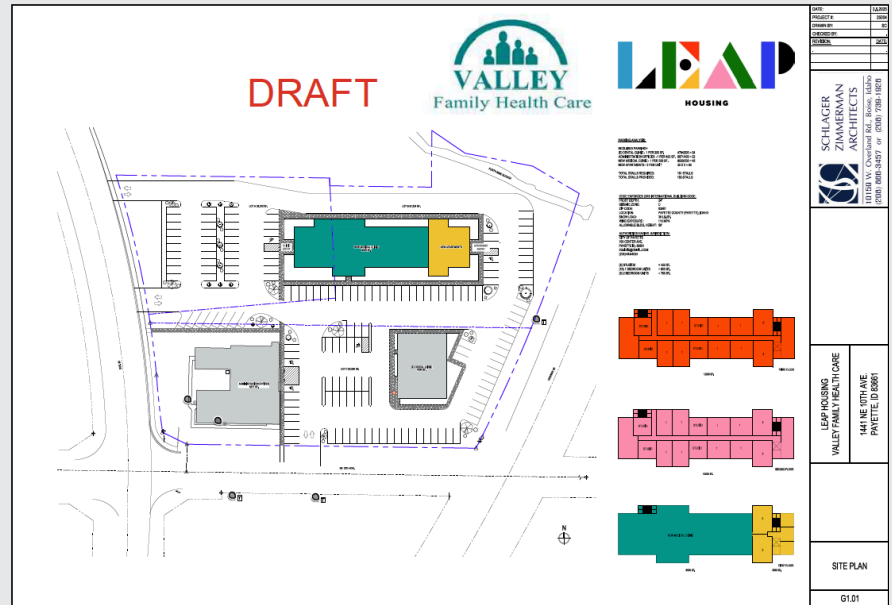
To make a donation, visit [Saint Alphonsus Ontario Foundation - Donate Now - Alphonsus](#) and select "Community Health Initiatives" from the Designation drop down menu or by calling 208-367-2121.

Community Impact at a Glance



STORY SPOTLIGHT

Payette County was selected in 2023 to participate in the national BUILD Health Challenge 4.0 Cohort to improve health outcomes for its residents. In FY25, the BUILD Payette Team, including Saint Alphonsus, hosted three community conversations to discuss local housing availability and needs. After careful review and consideration, it was determined that a future development should be made for adults aged 55 and older. In partnership with Valley Family Health Care and LEAP Housing, a proposed housing structure was drafted to be located above a new medical clinic site for Valley Family, offering primary care and pharmacy services to the community and housing residents. A stakeholder group was convened where site plans and considerations were discussed, including local service providers that could be co-located at the site to assist housing residents. Discussions will continue with the community into FY26 to further co-design the space and uses for greatest impact in Payette.



Ariel Foster
Senior Community Benefits Coordinator,
Community Health and Well-Being
Ariel.Serrano@saintalphonsus.org



Saint Alphonsus
A Member of Trinity Health