

# General Inpatient Rehabilitation

(October 1, 2005-September 30, 2006)



**753**

Number of Patients Seen



**65**

Average Age



**45%**

Percentage of Males



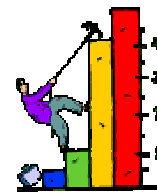
**55%**

Percentage of Females



**13 Days**

Average Length of Stay  
(National Average = 14 days)



**90.00%**

Met Predicted Outcomes  
(Goal=85%)



**80%**

Discharged to Community  
(National Average = 77%)



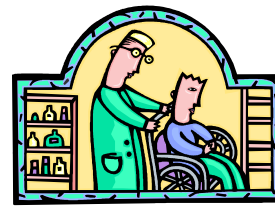
**6%**

Discharged to Hospital  
(National Average = 9%)



**6%**

Discharged to Long-Term Care  
(National Average =9%)



**8%**

Discharged to Other  
(National Average = 4%)



**3 Hours**

Minimum Hours of Therapy/Day  
(Minimum = 3 Hours)



**(Pending)**

Satisfied with Program  
(Goal = 85%)